

LA Intimate Partner Violence in 2023

Trends by Time, Location, and Victim
Demographics

Cameron, Ignacio, Bahar, Henry
- Project Cameron Coder



Introduction

LA Crime Dataset (2020-2024)

- Intimate partner violence is a serious public safety and social issue
- Often underreported and unevenly distributed across communities
- Understanding patterns can help identify **when, where, and who** is most affected

Motivation

- Analyze patterns in intimate partner crimes across Los Angeles
- Identify **high-risk areas** and **vulnerable** populations
- Examine differences in case outcomes across **demographic** groups
- Provide insights to **support targeted prevention** and policy efforts



Data Overview & Cleaning

LA Crime Dataset (2020-2024,
LA Open Data)

- Focus on 2023 (most recent complete year)
- **Scope of Analysis:**
 - Focus on Intimate Partner Crimes
- **Types of intimate partner crimes analyzed:**
 - Aggravated Assault
 - Simple Assault

Source: LA Open Data Portal

Each observation = one reported crime

Key variables:

- Date Occurred
- Area Name
- Crime Type
- Victim Age, Sex, Descent

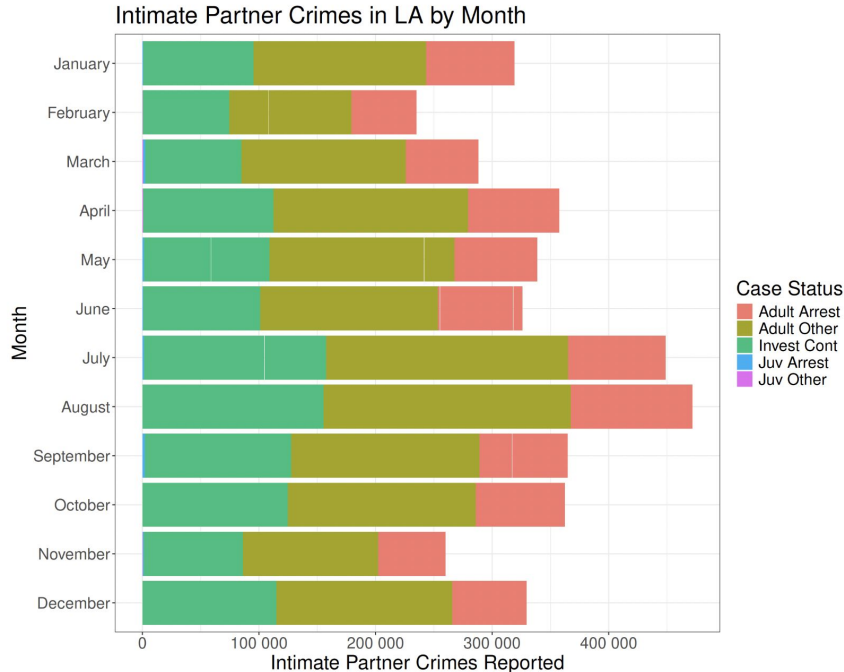


Research Question:

What month does LA have the highest number of intimate partner crimes? In what area is it the highest, and in what area is it the lowest? Is there a relationship between the status of the case and the victim's descent?

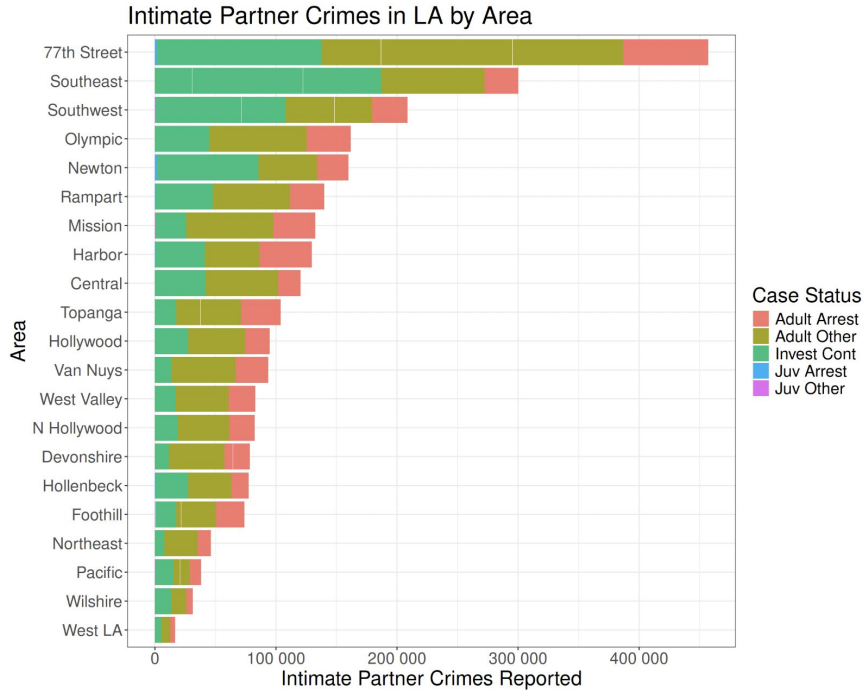


Intimate Partner Crimes by Month



- August peak season
 - July close second
- January, February, March with the lowest crime reported
 - February lowest overall
- Seasonal changes with intimate partner violence
- Factors to consider:
 - Increased social interaction
 - Financial stress
 - Overall seasonal behavioral changes

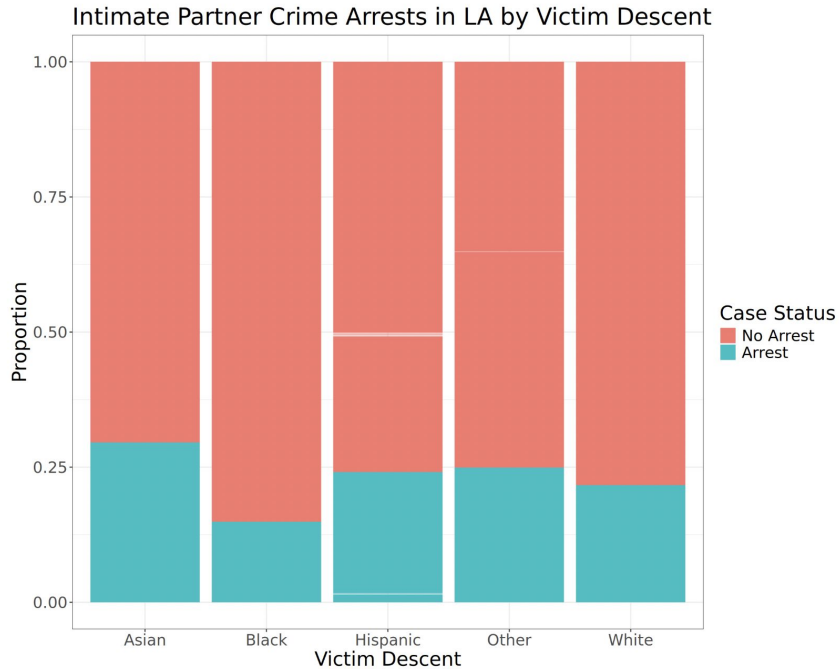
Intimate Partner Crimes by Area



- 77th Street area has the highest number of incidents by far
- Southeast/Southwest also stand out, but not quite as much as 77th Street
- West LA with the smallest number of intimate partner crime reports
- Extreme difference suggests that the LAPD may want to have more prevention/intervention resources in these high-prevalence areas



Case Status by Descent



- People of Black descent have the lowest proportion of arrests
- People of Asian descent have the highest proportion of arrests
- White, Hispanic, and other descents hover around 20-25%
- Potential inequities in case processing



Discussion and Conclusion

Key Findings: Partner violence peaks in summer, concentrated in SE LA

Interpretation: Geographic concentration may reflect socioeconomic/policing differences

Limitations: Analysis limited to 2023 data; potential reporting bias and missing variables

Statistical Constraints: Limiting ability to control for confounding variables.

Future Work: Apply regression models, and integrate external data to better explain drivers.