

# STA 199 ✨

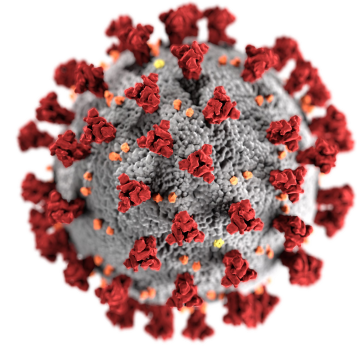
**project-tidy-team**

Kelly Gibbs, Zane Holley, Jason Li, Makky Mozie



# Topic & Motivation

“An Examination of Regional COVID-19 Response Behaviors”



## Our Question:

*How do COVID-19-related behaviors change over time, and how do these patterns differ across global regions?*

## Data:

# The Imperial College London YouGov Covid-19 Behaviour Tracker Data Hub

- Collected 2020-2022 via self-reported surveys
- Captures behavioral responses to COVID-19 across different countries

## Limitations:

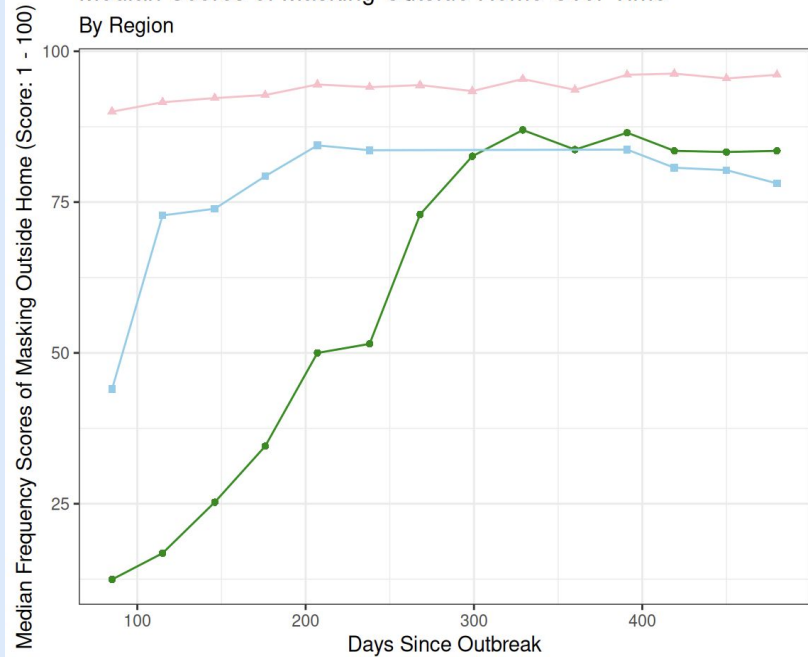
- Self-reported data → potential bias
- Underrepresents individuals with severe illness or limited survey access
- Some demographic and location details removed to protect anonymity(e.g. Middle East)

## Selected Variables:

- **Country (grouped into regions)**
- **Days Since Outbreak**
- **Behavior Counts (daily averages)**
  - Times left home
  - Handwashes
- **Behavior Scores (1 - 100 scale)**
  - Mask-wearing outside home
  - Avoidance of symptomatic individuals
  - Surface cleaning precautions
  - Perceived impact on respondent's life

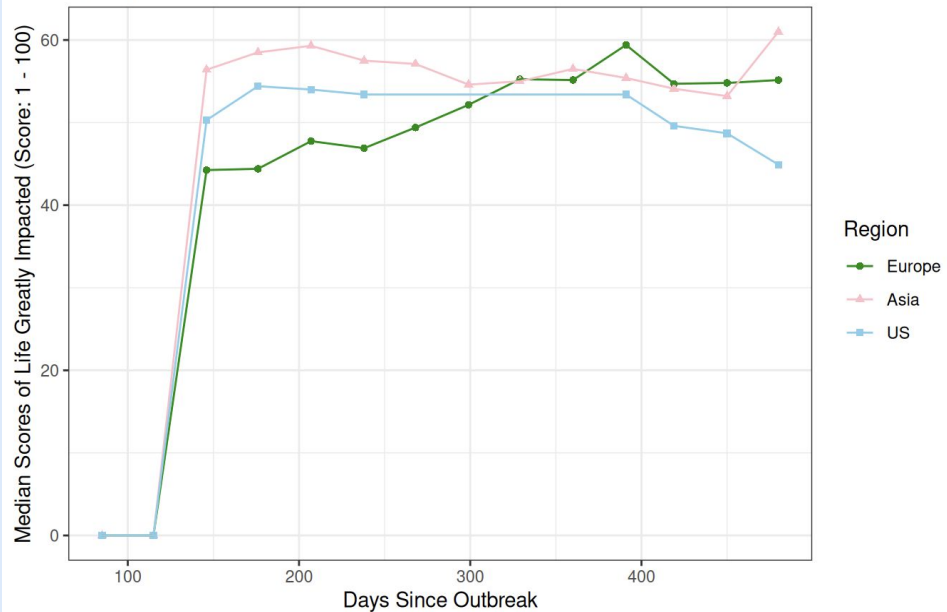
### Median Scores of Masking Outside Home Over Time

By Region



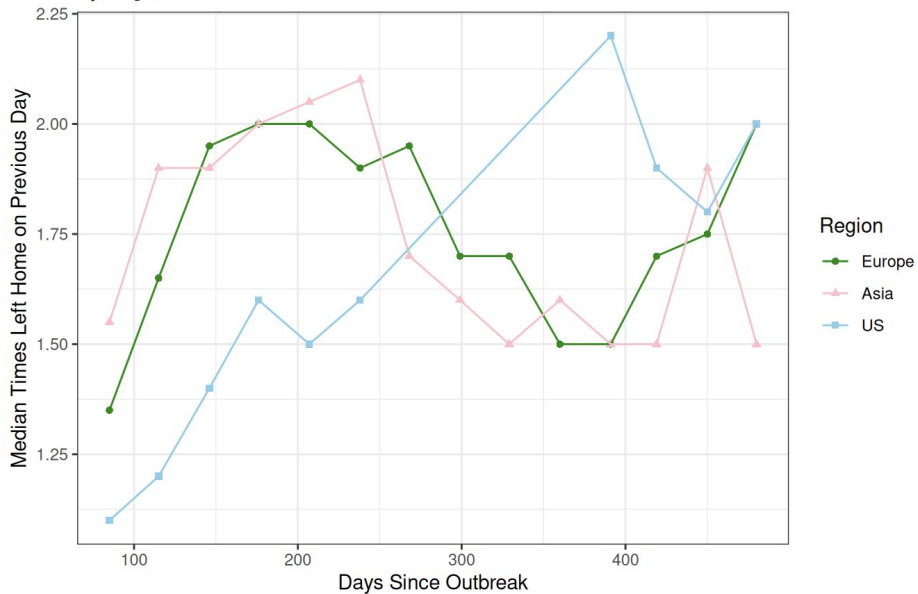
### Median Scores of Life Greatly Impacted Over Time

By Region



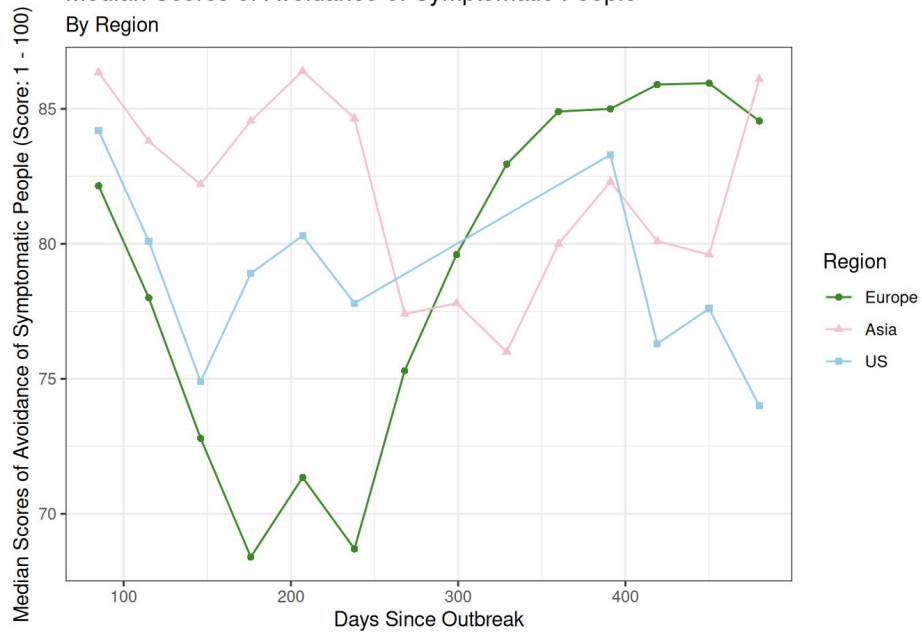
### Median Times Left Home Over Time

By Region

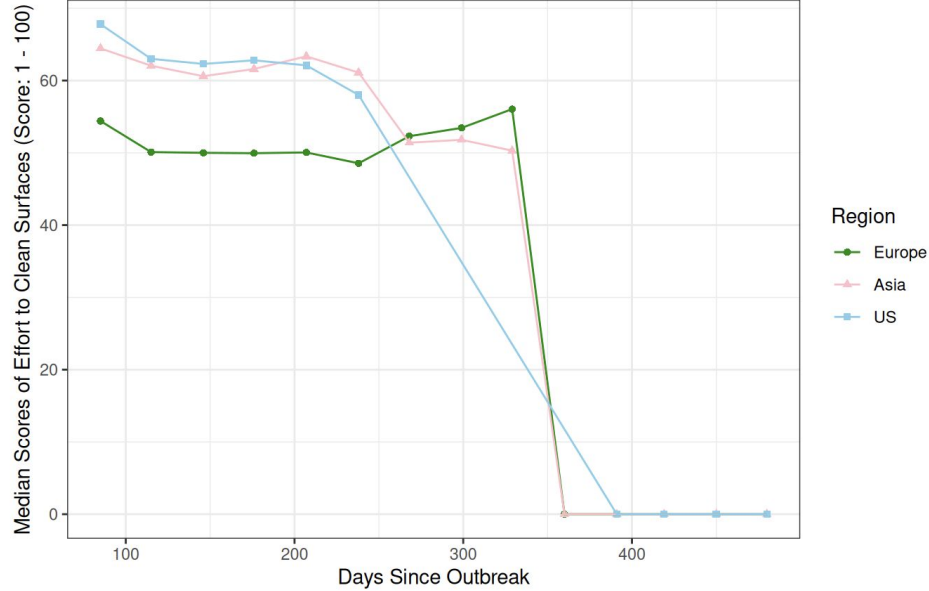


### Median Scores of Avoidance of Symptomatic People

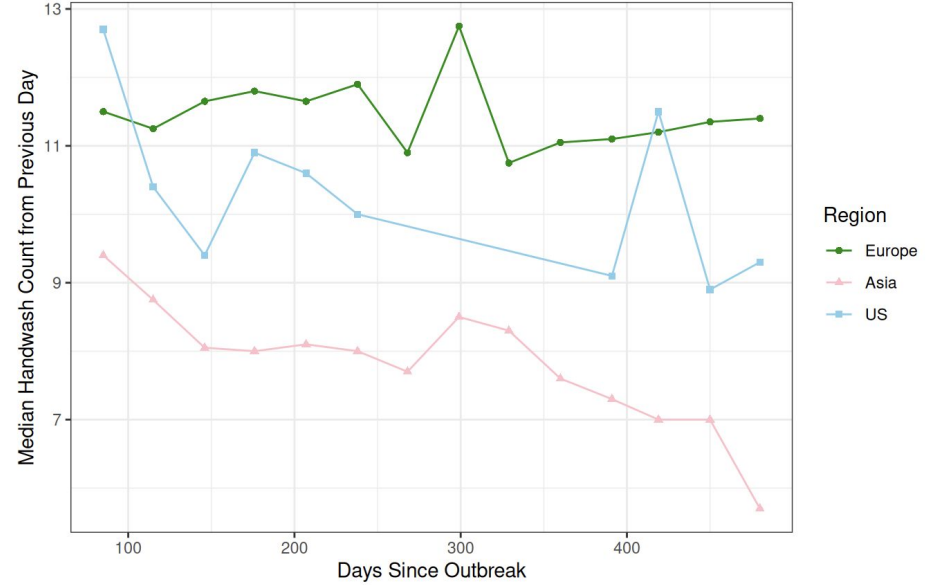
By Region



Median Scores of Effort to Clean Surfaces Over Time  
By Region



Median Handwash Count Over Time  
By Region



# Conclusions, Discussion, & Critique

## Expected trends as time passed:

- Increase in mask-wearing outside of the home
- Increase in scores people gave for how much their life was impacted by COVID-19

## Unexpected trends:

- Decrease in number of times people washed their hands
- Decrease in effort put into cleaning surfaces

Both would be expected to increase over time, or at least remain level once at a certain amount

## No clear trends:

- Times left home
- Effort to avoid symptomatic people

Both show some consistent periods of increases or decreases but no overall trend



Thank you!

